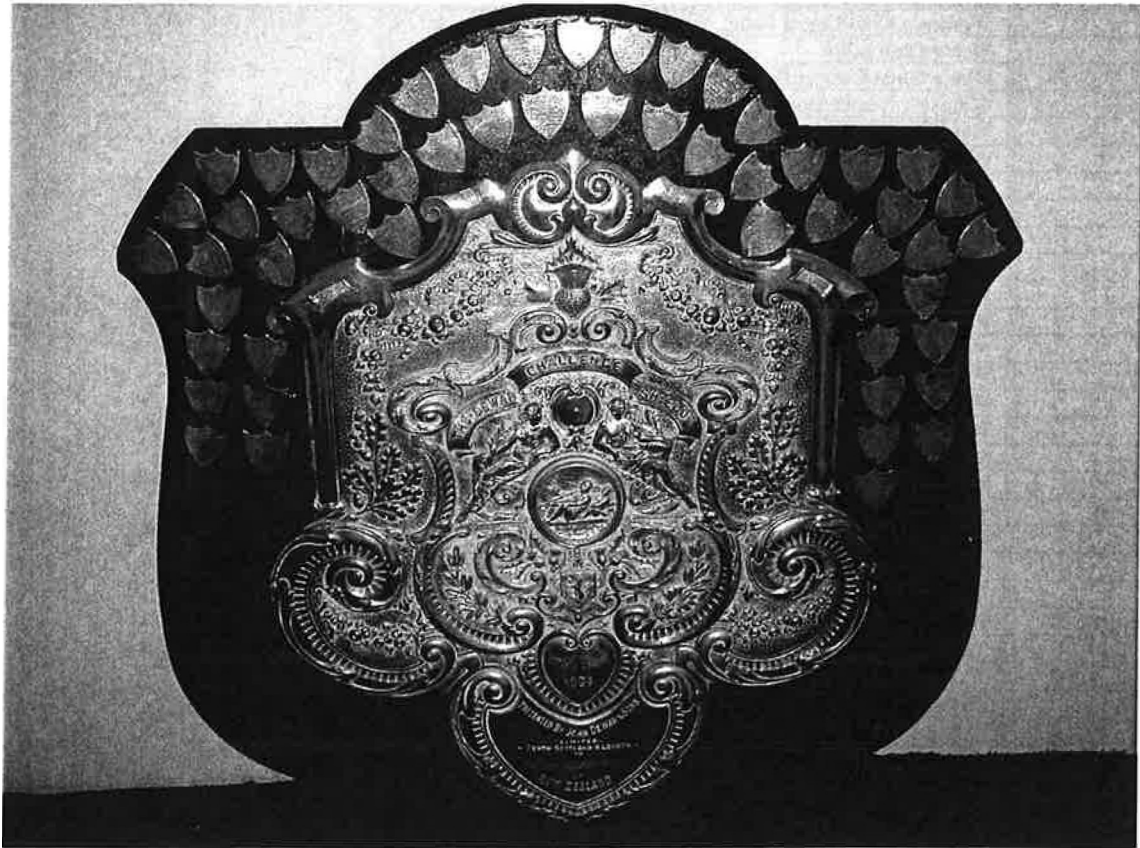


Dewar Challenge Shield



Blue Lake Regatta
18th / 19th January 2014

Hosted by Rotorua and Whakatane Rowing Clubs

DEWAR CHALLENGE SHIELD
18th & 19th January 2014, Blue Lake, Rotorua

Programme of Events

- | | |
|---|--|
| 1 Men's U16 Coxed Quad Sculls
2 Women's Club Coxed Four
3 Women's U17 Double Sculls
4 Women's U15 Double Sculls
5 Men's Senior Single Sculls
6 Men's U16 Coxed Four
7 Masters Double Scull – Mixed crews
8 Men's Club Eight
9 Men's Open Coxless Pairs
10 Women's Novice Double Sculls
11 Men's Novice Coxed Four
12 Women's Open Coxless Four
13 Masters Double Sculls
14 Men's Club Coxless Quad Sculls
15 Women's Club Eight
16 Men's U17 Coxed Four
17 Men's U15 Coxed Four
18 Women's Open Single Sculls
19 Men's Open Coxless Fours
20 Women's U17 Eight
21 Women's U15 Eight
22 Women's Club Double Sculls
23 Masters Quad/Four – Mixed Crews
24 Men's Club Coxed Four
25 Men's Novice Eight
26 Women's Open Coxless Pair
27 Men's Open Coxless Quad Sculls
28 Women's U16 Coxed Quad Sculls
29 Men's U19 Coxless Pairs
30 Women's Club Coxless Quad Sculls | 31 Women's U19 Single Sculls
32 Masters/Rec Eight/Octuple
33 Women's Novice Coxed Four
34 Men's Open Double Sculls
35 Women's U16 Coxed Four
36 Women's Open Coxless Quad Sculls
37 Men's Club Coxed Quad Sculls
38 Men's U17 Eight
39 Men's U15 Eight
40 Men's U19 Single Sculls
41 Women's U17 Coxed Four
42 Women's U15 Coxed Four
43 Women's Open Eight
44 Men's Club Double Sculls
45 Women's Senior Single Sculls
46 Men's U17 Coxed Quad Sculls
47 Men's U15 Coxed Quad Sculls
48 Women's Novice Eight
49 Women's Open Double Sculls
50 Men's Novice Double Sculls
51 Men's Open Single Sculls
52 Women's Club Coxed Quad Sculls
53 Masters/Rec Quad/Four
54 Men's U17 Double Sculls
55 Men's U15 Double Sculls
56 Women's U17 Coxed Quad Sculls
57 Women's U15 Coxed Quad Sculls
58 Women's U19 Coxless Pairs
59 Men's Open Eight |
|---|--|

No	Event	Snr	Open	Club	Age	Nov	Mst	1X	2(X)-	4(x)-	4(X)+	8
I	Men's U16 Coxed Quad Sculls				M						X	
2	Women's Club Coxed Four			W							X	
3	Women's U17 Double Sculls				W				X			
4	Women's U15 Double Sculls				W				X			
5	Men's Senior Single Sculls	M						X				
6	Men's U16 Coxed Four				M						X	
7	Masters Double Scull – Mixed crews						U		X			
8	Men's Club Eight			M								X
9	Men's Open Coxless Pairs		M						X			
10	Women's Novice Double Sculls					W			X			
11	Men's Novice Coxed Four					M					X	
12	Women's Open Coxless Four		W							X		
13	Masters Double Sculls						U		X			

DEWAR CHALLENGE SHIELD
18th & 19th January 2014, Blue Lake, Rotorua

Conditions

1. **RULE APPLICATION :** All events will be rowed in accordance with the rules of the NZRA and BOPRA in so far as they may apply to this regatta and may be modified more expressly in these conditions.
2. **DISTANCE OF RACES:** The distance of all events on both days will be approximately 1400-1500 meters. The course will be straight with a maximum of ten crews in a race depending on the class of rower and type of event. Races will not be started with held starts and starters will be under instruction to start races as soon as all boats are aligned in a relatively straight line. Crews deliberately breaking the line will be relegated to last place. There will be no lanes on the course except for the outside markers.
3. **REGATTA DATES:** The regatta will commence on Saturday 18th January 2014 at 8.00am and continue on Sunday 19th January. Clubs entering this regatta must understand that it is one regatta held over two days, not two separate one day regattas.
4. **WATER TRAFFIC RULES:** All crews must proceed to the start as directed (A map showing the lake layout will be available on the shore). Crews must not cross the course at any stage during the regatta. Crews must be in the start zone at least five minutes before the advertised time of their race. Boat marshals will be on hand to direct crews into the starting position. The race will take place without reference to absentees. Boats have to finish on the inside/course side of the final marker or they will be disqualified.
5. **BOAT NUMBERS:** All boats must carry an Alpha boat number provided, which indicates the LANE number as shown on the day sheet (NOT crew number). Crews without a number may not be allowed to start. The number must be placed on the boat to be read from the judge's side of the course at the finish.
6. **RACE STRUCTURE:** Every endeavor will be made to maintain the racing structure as proposed. However the Race Committee reserves the right to alter, for any reason it sees fit, the programme as published.
7. **COXSWAINS:** The minimum weight for all coxswains is 55kg. To make up this weight, dead weight (to the maximum of 20kg) shall be carried in the boat. Coxswains will not be required to weigh in for the regatta but they must ensure they are above the minimum weight limit as shown. They may be check weighed at the conclusion of any race and if found to be below the minimum weight, the crew will be liable to immediate disqualification in that event. All Coxswains must wear a lifejacket or their crew will not be allowed to start the race.
8. **CLASSIFICATION OF ROWERS:** Classification will be based on the NZRA Rules of Racing.
9. **QUALIFICATION SYSTEM:** Crews will qualify for finals on the second day according to their finish positions in their races on day one.
10. **SCRATCHINGS:** After the entry close-off date rowIT will be reopened for scratchings. Scratching can be lodged with the Regatta Control one hour before the start of the crews race. Once scratched a crew cannot re-enter on the second day
11. **SUBSTITUTIONS:** After the entry close-off date rowIT will be reopened for substitutions. Substitutions can be lodge with the Regatta Control one before the crews race.

12. **CLASSIFICATION OF REGATTA:** This regatta is not a classification Regatta within the rules of the NZRA

13. **SAFETY:** We draw your attention to the following requirements:

1. All boats racing must have heel restraints not more than 70mm long.
2. All boats must have a bow ball.

Random checks will be carried out and crews not complying will not be allowed to race.

14. **DEWAR CHALLENGE SHIELD:** This trophy is for competition at this regatta on a points system. This points system is based on 3 points for a win, 2 points for a second and 1 point for third. It is open to all clubs competing at the regatta and will be competed for in an A final only.

15. **EXCLUSION OF LIABILITY IN TORT OR OTHERWISE:** Bay of Plenty Rowing Association Inc reminds rowing clubs and rowers participating in this regatta that, while every care is taken by Regatta Officials to ensure that the regatta is conducted safely, fairly and efficiently and in accordance with the Rules of racing established by the New Zealand Rowing Association Inc as may have been amended by the regatta organizers of the Bay of Plenty Rowing Association Inc, it is the responsibility of each club and its rowers to ensure compliance and to comply with those rules, and to otherwise ensure that they conduct their rowing activities safely.

It is a condition of participation at this regatta that every club and participant accepts that no liability in tort or otherwise howsoever shall attach to:

- Bay of Plenty Rowing Association Inc
- Whakatane Rowing Inc
- Rotorua Rowing Club Inc

(collectively called "the organisation") for any harm or injury, loss, damage or nature, including (by way of example only) damage to equipment or injury to persons of whatever nature incurred in the course of or in connection with, or in any way related to this event, regardless of whether any errors, omission, wrongdoing, oversight, carelessness, or other wrongful act may, on the part of any regatta official or other person associated with the organisation, be established.

16. **ENTRIES:**

1. Entries must be made via the rowIT website entry system

2. **ENTRY FEES:** Entry fees per boat will be as follows:

- Eights \$32.00 (incl GST)
- Fours/Quads \$24.00 (incl GST)
- Pairs/Doubles \$18.00 (incl GST)
- Singles \$12.00 (incl GST)
- Amenity fee \$5.00 per athlete (incl GST)

3. **ENTRY PAYMENT:** Payment should be made to the Rotorua Rowing Club Bank account: National Bank 06 0413 0463687 00.

Please note the Club/Group who is paying as a reference.

A confirmation email should be sent to glenrosefarms@xtra.co.nz, with contact details and postal address and a tax invoice will be sent back.

If paying by cheque please forward to Rotorua Rowing Club, PO Box 620, Rotorua 3040.

4. **CLOSING DATA FOR ENTRIES:** Entries close on Sunday 12th January 2014 5.00pm

The fees must be paid within two days of the closing date-13th January to avoid the possibility of entries not being accepted. Late entries may be accepted prior to the start of the regatta provided the event has a heat that is not full.