

DATE

The regatta will commence on Monday 18 March 2024 and will run until Saturday 23 March 2024, with Sunday 24 March (until midday) being the official reserve day.

TIMES

Racing will commence at 8:00am on Monday 18 March 2024 and daily as directed by the Day Sheets. For the purposes of the regatta sunrise is at **7.40am** (except on the reserve day when it is **7.47am**) and sunset at **7.55pm**.

LOCATION & COURSE DETAILS

The regatta will be held on Lake Ruataniwha, Twizel, New Zealand. The course consists of a 2000 metre, ten lane Albano course with markers at every 500 meters and the lanes numbered 1-10 with number 1 being closest to the shore. Only eight lanes will be used for this regatta. The course is straight with a controlled but even flow against the race direction.

CONDITIONS APPLYING TO THE REGATTA

The regatta is being held in accordance with the NZSSRA Rules of Racing, Regulations for Regattas and Safety System, School Sport NZ School Team Eligibility Criteria, South Island Rowing Health and Safety System, South Island Rowing Risk Management Plan and these Terms and Conditions. We recommend all competitors should be familiar with them. In addition, the Rules of the NZRA and South Island Rowing Inc. will be diligently referenced.

CLASSIFICATION OF RACES

Races are classified by boat type, gender, age and, where applicable, ability (Novices). Classifications are made in accordance with Rule 11 of the [NZSSRA Rules](#).

BOAT TYPES

The regatta is for rowing boats that meet the requirements of Rule 4 of the [NZSSRA Rules](#) and fall in the following categories: Singles, Doubles, Pairs, Quadruples, Fours, Eights and Octuples.

ORDER OF EVENTS

The order of events is that which came into effect after the 2021 NZSSRA AGM and is listed in Appendix D of the NZSSRA Constitution.

REGATTA FEES

The fees for the regatta, which are GST exclusive, are as follows:

Entry fees

Eights	\$70.00 per crew
Fours/Quads	\$52.00 per crew
Pairs/Doubles	\$40.00 per crew
Singles	\$30.00 per crew
Amenity fee	\$34.00 per competitor

Other fees

Entry Protest	\$20.00
Race Protest	\$20.00



Appeal	\$20.00
Late Scratching	\$40.00
Non-Progression	\$100.00
Non-Notified Crew Change	\$50.00
Non-Notified Scratching (DNS)	\$60.00

Refer to [List A on the NZSSRA website](#)

An amenity fee must be paid for each and every competitor who is entered into crews as at 8am on Saturday 16 March 2024, and for every competitor who is subsequently entered into crews e.g. through late entries or substitutions.

The current practice for all Regattas on Lake Ruataniwha will apply. This means that an invoice will be produced by SIR after the close of entries and emailed to the address provided. You will also be invoiced for all additional regatta fees such as non-progression and did not start charges.

ENTRIES AND ENTRY LIMITS

Entries close at 8:00am on Wednesday 6 March 2024. Entry into the regatta is by way of Online Regatta Entry through the NZSSRA website (www.schoolrowing.org.nz) or rowIT (rowit.nz). The address for any correspondence is secretary@ruataniwha.co.nz

Schools are limited to the following limits per event:

- **Single Sculls and Double Sculls - one entry per school**
- **All other boats - four entries per school**
- **Maximum three events per rowers (not coxswains)**

Late entries may be accepted at the sole discretion of Regatta Control.

The Online Regatta Entry system will generate all the forms necessary to complete entry into the regatta and they must then be signed by school's Principal and emailed to: declarations@schoolrowing.org.nz

Entries shall include a record of any medical conditions or allergies that apply to competitors competing in the regatta as required by the form on rowIT. The entry entity shall ensure that this is accurate and up to date for all competing competitors. Entries should include accurate information on the swimming ability of each competitor competing as required by the relevant form on rowIT.

MAXIMUM NUMBER OF CREWS IN RACES

The maximum number of entries for an event is 64 crews. Should an event be over-subscribed (reach the event maximum of 64 crews at the initial entry stage) then the crews-per-school-per event limit may be lowered for that event, or a time trial held to determine those that will progress.

Supplementary entries may be accepted for this regatta to fill vacant lanes on such terms and conditions as advised at the time of calling for such entries.



CREW CHANGES/SUBSTITUTIONS

All crew changes and substitutions must be completed online through the NZSSRA website (www.schoolrowing.org.nz) or on rowIT (rowit.nz) up until 1pm on Saturday 16 March 2024.

A school making a substitution of crew members after 1pm on Saturday 16 March 2024 shall make that substitution online through the NZSSRA website (www.schoolrowing.org.nz) or rowIT (rowit.nz) or at the Secretary's Office in writing up until 60 minutes prior to the relevant race for the competitor at the regatta.

Applications for substitutions after the heats must be accompanied by a medical certificate or evidence of expulsion from the regatta and must be advised in writing to Regatta Control by an appropriately authorised member of the school party at the earliest opportunity but no less than 60 minutes prior to the race.

SCRATCHINGS & NON-PROGRESSION

Any scratching lodged before 1pm on Saturday 16 March 2024 must be lodged on the NZSSRA website (www.schoolrowing.org.nz) or at rowIT (rowit.nz).

After this time must be advised via NZSSRA website (www.schoolrowing.org.nz) or via rowIT (rowit.nz) or to Regatta Control by an appropriately authorised member of the school party as follows:

- a) for heats: by 10:00am on the day of the race; except for races before 10:30am, which must be notified at least 30 minutes before the race starts.
- b) for finals: at least four hours before the start of the specific final.

Any boat that is scratched from or does not start a race it has progressed to shall incur a non-progression monetary penalty of \$60.00.

Schools who fail to notify a scratching by the nominated time or whose crew/s do not take part in an event in which they have been entered, shall incur a monetary penalty of \$100.00 for each crew not properly scratched. The scratching penalty can be incurred in addition to the non-progression penalty.

PROGRESSION

In an event where there are more entries than places in the final, progression to the finals will follow a progression system as approved by the NZSSRA Schools Committee to determine the finalists for the finals.

It is intended to use the [Option 1 progression](#) system for most events but Option 7 for U18 events (excluding Novice). The allocation of crews to heats shall be seeded.

Option 1 has no repechages and instead adds quarterfinals for events with more than 40 entries. Those quarterfinals may be raced in the round with other event's repechages.

Time trials may be used to make up time should the regatta be severely delayed for any reason and is unable to be completed using the published progression system.

The time interval set between successive 'A' Finals will be 20 minutes, but the Race Committee could alter this to suit the prevailing conditions. Persons arranging entries should take this into account to ensure crews have sufficient time available to make boat and/or crew changes between races.

PRE-REGATTA MEETING

A pre-regatta safety briefing will be held on Sunday 17 March at 4:00pm in the theatre at the Twizel Events Centre, Market Place, Twizel.

A roll will be recorded. Attendance at this meeting by the school's Adult Safety Officer is compulsory for those schools wishing to compete in the regatta.

ADDITIONAL REGATTA INFORMATION

APPROVAL

The regatta programme for this regatta has been approved by the NZSSRA.

BOAT SAFETY STANDARDS

It is a matter of importance that all boats must be in a safe condition for rowing. Crews are responsible for this pursuant to Rule 4 of the [NZSSRA Rules](#). Race Officials (or other persons so appointed by the Organising Committee) will conduct boat safety compliance checks and all boats that pass the compliance check will have a sticker attached to the bow of the boat. Boats not displaying a sticker shall not be permitted to take to the water.

COMMUNICATION DEVICES

NO cell phones, or other electronic communication devices (capable of communication with anyone outside the boat) are permitted to be carried in a boat whether switched on or off.

COMPLIANCE WITH PART 101 OF CAA RULES

Pursuant to Rule 101.207(a)(1)(i), participants in this regatta as competitors or as officials or volunteers shall be deemed to have consented to be under any unmanned or remotely piloted aircraft operated by SIR or any of its agents or contractors.

CONDUCT OF ROWERS

Schools, Coaches and crews are reminded that the school party is considered to be at the regatta from the start of the first day of racing until the official end of the regatta. Refer to rule 20 of the NZSSRA Rules.

COVID-19

A substitution of a crew member made because that crew member who has been infected by COVID-19 will be considered a medical substitution for the purpose of rule 13.4 of the



[NZSSRA Rules](#). Where a crew is scratched because a crew member has been infected by COVID-19, this will be considered a scratching made due to medical reasons.

A certification (in a form prescribed by Regatta Control, if any) by the Head Coach, or another suitable senior school official accompanied by any evidence Regatta Control may require, will be considered as sufficient medical evidence of a crew member's infection of COVID-19.

COXSWAINS

Coxswains shall weigh in pursuant to Rule 12.4 of the [NZSSRA Rules](#) i.e., not less than one hour and not more than two hours before their first race on each day of competition. Coxswains must provide their own weights.

Coxswains will not wear heavy cotton or woollen clothing (such as jeans, sweaters, or sweatshirts) but suitable clothing that will keep them warm (e.g., poly-pros, polar fleeces etc.) such that in an event of capsize or sinking, the water will not render the clothing a hazard.

Lifejackets:

Coxswains must comply with Rule 12.7 of the [NZSSRA Rules](#) or must wear a non-inflatable buoyancy aid which is substantially compliant with New Zealand Standards (NZS 5823:2005), suitable for their size and age and/or weight, and outside all other clothing.

Lifejackets must be in good condition and have in a legible state, the manufacturer's label, and certification intact. Under no circumstances are inflatable (either manual or automatic) lifejackets to be worn by coxswains during the regatta.

CREW IDENTIFICATION

There have been a number of instances where there have been difficulties with crew recognition. To solve such difficulties, photographs of individual crew members may be taken at the Start or Finish of any race and held as part of the official records of the event.

EXCLUSION OF ALL TORT LIABILITY OF WHATSOEVER NATURE

South Island Rowing Inc. reminds all schools and pupils participating in this Regatta that while every care will be taken by the regatta officials to ensure that the regatta is conducted safely and efficiently in accordance with the Rules of Racing established by the New Zealand Secondary Schools Rowing Association (NZSSRA), it is the responsibility of schools to ensure that those rules are complied with and of the pupils to comply with them to ensure safe rowing activity.

Further, it is a condition of participation in this regatta that all participants accept and note that no liability either in tort or any other nature whatsoever is accepted by or will attach to the New Zealand Secondary Schools Rowing Association for any

harm, damage, loss, costs, expenses, inconvenience, interference of whatever nature and whatever kind including any damage to equipment or injury to persons of whatever nature incurred in the course of or in connection with or in any way related to the regatta regardless of whether any error or omission, wrongdoing, oversight, negligence, or other tort whatsoever on the part of any regatta official or other person may be established.

MEDAL PRESENTATION

Medals are available to the first, second and third placed crews from the 'A' finals. After each race finishes, the first three place getters are to proceed to the back of the dais for the ceremony. All other boats are to be returned directly to the boat park. The medal presentations will be made to each race and medal winning Crew members as soon as any preliminary actions are complete.

NOTIFICATION TO REGATTA CONTROL OF MEDICAL ASSESSMENTS (EITHER ON-SITE OR OFF-SITE)

Each competitor by entering this regatta agrees to the first aid team notifying Regatta Control when the medical services are used by the competitor.

Each competitor entering this regatta agrees to notify Regatta Control (before the competitor next competes) when they have undergone a medical assessment (other than through the on-site first aid team) and further agrees to provide the results of the assessment. This ensures that Regatta Control is made aware of all medical assessments.

Schools will ensure that each competitor that is assessed by either the on-site first aid team or assessed externally to the regatta and who receives an assessment as being unfit to compete is removed from racing by substituting them out of all crews in which they are entered or scratching all crews in which they are entered or through a combination of scratching and substitution.

PHOTOGRAPHY & VIDEO

By attending this regatta as a competitor, coach, supporter, spectator or volunteer, attendees give their consent to South Island Rowing Inc., NZSSRA, Rowing NZ and any of their commercial or media partners to use their image and likeness and/or any interview statements for publishing and posting on social media websites and/or South Island Rowing Inc., NZSSRA, or Rowing NZ's website and other forums used by South Island Rowing Inc., NZSSRA, or Rowing NZ. Attendees further acknowledge and agree that their consent includes (but is not limited to):

- Permission to Interview, film or otherwise make a video production of them and/or record their voice.
- Permission to use their name, and
- Permission to use quotes from interviews (or excerpts of such quotes), either film, photographs and/or video recording of them in electronic media (including South Island Rowing Inc., NZSSRA, or Rowing NZ's website and



social media websites).

This permission is given for the purpose of South Island Rowing Inc., NZSSRA, and Rowing NZ promoting public awareness of, and publicising their activities and achievements.

Footage and photos from the regatta will be shared with New Zealand media. By attending the regatta attendees are giving permission for Rowing NZ to pass on photos and footage captured that may include the attendee so the event can be covered/promoted.

No drones are permitted at this regatta (with the exception of South Island Rowing Inc. or any broadcasting or media partner according to the conditions agreed to with the NZSSRA or Rowing NZ).

POSTPONEMENT OR CANCELLATION

The Organising Committee shall be under no obligation to refund any fees whatsoever because of the postponement or cancellation of the regatta for whatsoever reason. Rowing is an outdoor sport and as such is subject to the weather being suitable on any given day to conduct the regatta in a safe and responsible manner.

RAFFLES

The selling of raffle tickets or goods for the purpose of raising money for any cause is not permitted under any circumstances unless permission has been gained from South Island Rowing Inc. prior to the regatta. Anybody caught selling raffle tickets or goods for the purpose of raising money at this regatta runs the risk of their crews being scratched from their events.

RESPONSIBILITY FOR SAFETY AND FITNESS

Competitors shall take responsibility for their own health and fitness. School officials are responsible for every crew from their school, and specifically should ensure:

- that each crew's boat complies with Rule 4 of the [NZSSRA Rules](#); and
- that the competitors are also fit to race.

Any continuing concerns as to safety and fitness are to be brought to the attention of the Chief of Control Commission or Boat Marshall or Safety Officer prior to the crew taking to the water.

RESPONSIBILITY FOR FAILURE TO DISCLOSE MEDICAL INFORMATION

Each competitor shall be primarily responsible for ensuring that the entity that submits entries to the regatta shall have up to date information on any medical conditions that the competitor has prior to the close of entries.

Each person who submits entries on behalf of an entity entering the regatta shall:

- ensure that specified medical information about competitors is submitted to SIR by the closing date and time for the entries.

- where a competitor is diagnosed with a medical condition after the close of entries, the person responsible for the crew shall submit that information to Regatta Control as soon as possible.

SMOKING, ALCOHOL AND DRUGS

This regatta is deemed to be smoke, alcohol and drug free for the participants and the conduct provisions apply to any breaches. Coaches and crews are advised that, as a condition of entry into this regatta, rowers may be required to undergo tests for substances prohibited by Rowing New Zealand's anti-doping code, the International Rowing Federation, FISA and the IOC. Such tests will be undertaken by the New Zealand Sports Drug Agency who will be acting in an independent capacity under the New Zealand Sports Drug Agency Act.

TROPHIES

The trophies awarded at this regatta are listed at [List B on the NZSSRA Website](#).

VARIATIONS

The Organising and Race Committees reserve the right to change the conditions, programme, progression system or course should exceptional circumstances prevail.

VENUE CARE

The regatta venue is private property and should be given due respect. To assist the hosts, maintain the venue, please do not litter, look after the assets and report any damage or breakages to Regatta Control. The conduct provisions apply to persons abusing the hosts' hospitality.

ADDITIONAL LOCAL INFORMATION

BIO SECURITY HAZARD

This Lake contains Didymo which is a Bio-security Hazard. All boats and oars must be washed with detergent when leaving the Complex. Facilities are available at the boat park entrance, and you are expected to use them. Failure to do so places you in breach of the Bio-Security Act and liable for prosecution.

All crews that have used Lake Karāpiro in the past 30 days before arriving at Lake Ruataniwha, must follow the MPI "Check, Clean, Dry" requirements for the Golden Clam outbreak.

BOAT NUMBERS

The Regatta Committee supplies bow numbers to be used at the regatta and these are the only numbers to be used.

Crews without a number will not be allowed onto the water. If a crew loses their number on the way to the start, they should inform a Race Official immediately. Numbers not returned will be charged at \$25+ GST per instance.

BOAT PARK

Further information regarding access to the boat park will be



provided at a later date.

FLAG SIGNALS

GREEN FLAG – Lake is open for training racing as directed

YELLOW FLAG – Regatta is temporarily postponed

RED FLAG – Lake is closed to all regatta participants (a regatta participant for the purpose of this clause is a person whose name appears as an entrant in the official regatta entry records)

BLUE FLAG – Regatta is abandoned

Coach boats or non-rowing boats – No coach boats or other non-rowing boats are allowed on the water at any time during the regatta without the express permission of the Chief Umpire.

NON-START RETURNS

For safety reasons, non-starters must return to Boat Park on the regatta course as directed.

PARKING

Parking is only permitted in the designated areas.

PROCEEDING TO THE START

All crews must proceed to the start on the shoreline side of the course and then into The Bay unless specifically directed.

Crews must line up in the start zone prior to moving into the starting blocks following the direction of the Race Official.

Crews must not proceed to the start on the course or cross the course at any stage during the regatta without prior approval of the Chief Umpire in each instance.

Crews must be in the start zone at least five minutes before the advertised start time of their race. The starter will inform crews of the time remaining before the start of the race at appropriate intervals.

ROWED CODE

NOTE: This is a hydro lake used for the commercial production of electricity. Conditions change unexpectedly. Environment Canterbury has rigid controls over where rowing is permitted and must be respected.

SAFETY

Use of the lake is subject to Maritime NZ Rules and ECAN's Navigation Safety Bylaws 2010. Note that in enforcing these laws, ECAN also enforces compliance with the RNZ's Water Safety Code 2016. All crews and coaches should be conversant with NZSSRA Safety System and RNZ's Water Safety Code 2016.

Note: WATER SAFETY BEGINS WITH YOU - Rowing, by its very nature, has an element of danger associated with it and it is a responsibility of all participants to ensure that safe practices are to be used at all times. Safety equipment is available for the official racing and training hours of the regatta only.

Responsibility for going on the water lies at all times entirely with the crew.

START PROCEDURE

As it is difficult to identify raised arms, it is preferred that prior to the commencement of the start command the Bow or Two person of a crew raise their arms. These are not recognised after the attention call.

Please note: **THE START AREA IS A QUIET ZONE**

TEMPERATURE IMPACT

Ambient temperatures can vary significantly during the day in Twizel and as part of the safety program it is highly recommended that all rowers on the water wear thermals during the times of low temperatures. Please ensure that your rowers have the appropriate clothing with them and that they are appropriately dressed for the conditions.

TRAINING ON THE LAKE

NZSSRA official training hours are from half an hour after sunrise until half an hour before sunset but not 30 minutes before, during or 30 minutes after the times of racing. The Site Safety Officer and Chief Umpire will determine when crews are allowed to train on the course (defined as the area of water that is on the start side of the finish line) and elsewhere on the lake during the Regatta.

South Island Rowing intends to make safety resources available that will allow training during the days before the regatta commences. As this is dependent on the availability of suitably trained personnel, details will be made available from the Secretary's Office on the day. Crews must obey the requirements given in the relevant safety documentation.

Training on the lake is done entirely at the crew's risk and the school's Adult Safety person is responsible for ensuring MSA, NZRA, NZSSRA and ECAN Safety Rules are complied with. Any crew ignoring these conditions or in breach of the safety system may be fined a monetary penalty and may be disqualified by the Chief Umpire from taking further part in the regatta. The Chief Umpire shall also reprimand the coach.

WATER TRAFFIC RULES

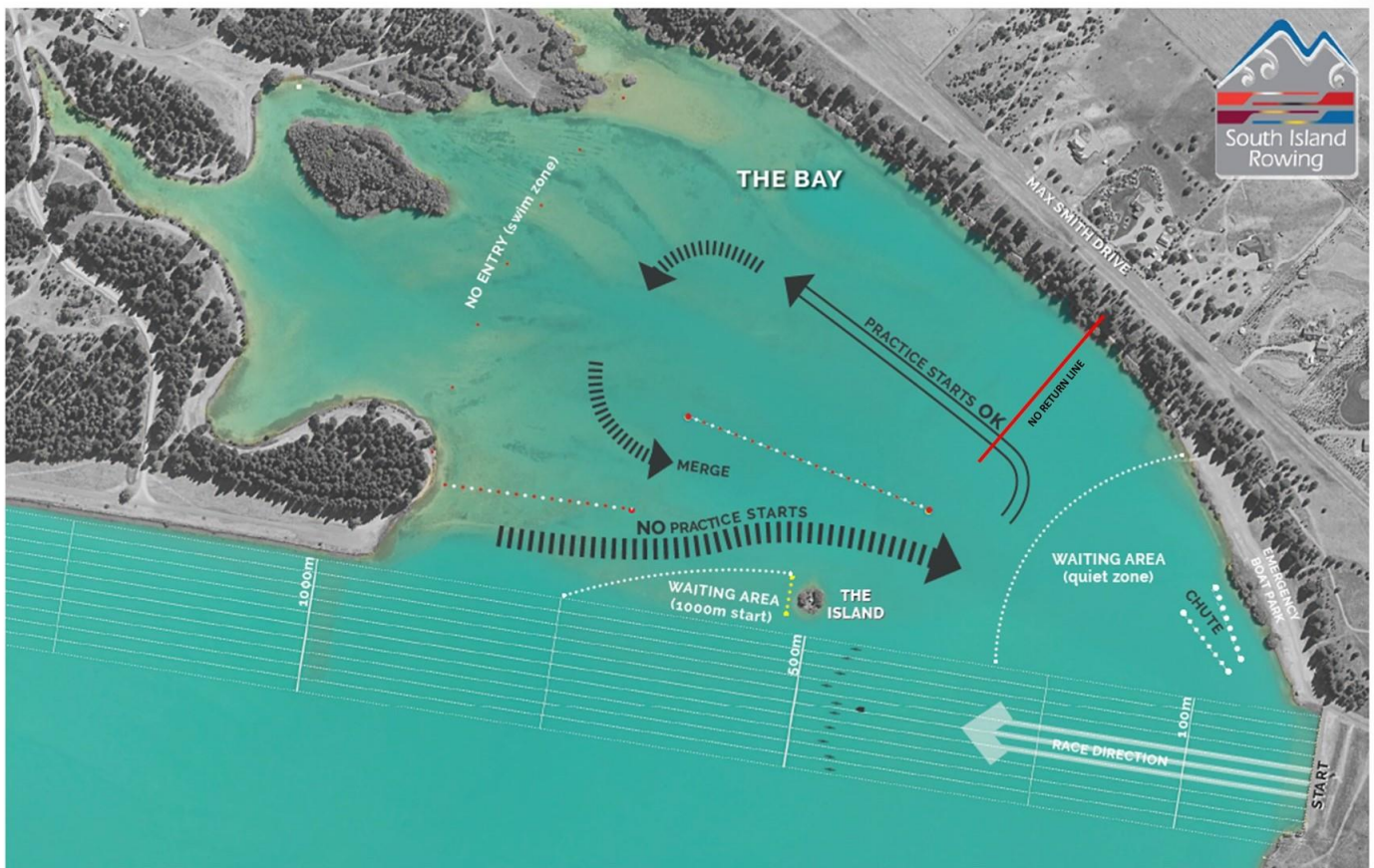
The traffic rules for training and racing are as displayed at the Number's Hut. The traffic rules must be strictly complied with.

THIS EVENT IS SANCTIONED BY SCHOOL SPORT NZ





ROWED CODE | LAKE RUATANIWHA



TRAFFIC PLAN | THE BAY & START ZONE

