



CONDITIONS

DATE

The Rowing will commence on Monday 28th March 2022 and continue until Saturday 2nd April with Sunday 3rd April 2022 until noon as the spare day.

TIMES

Racing will commence at 8:00am on Monday 28th March 2022 and daily as directed by the Day Sheets. For the purposes of the regatta sunrise is at 7:51am and sunset at 7:37pm each day.

LOCATION AND COURSE DETAILS

The regatta will be held on Lake Ruataniwha, Twizel, New Zealand. The course consists of a 2000-meter ten-lane Albano course with markers at every 500 meters and the lanes numbered 1-10 with number 1 being closest to the shore. Only eight lanes will be used for this regatta. The course is straight with a controlled but even flow against the race direction.

CONDITIONS APPLYING TO THE REGATTA

The regatta is being held in accordance with the NZSSRA Rules, Regulations and Safety System, NZSSSC school team eligibility criteria and these Terms and Conditions. We recommend all competitors should be familiar with them. In addition, the Regulations for Regattas and the Directives and Conditions of RNZ and South Island Rowing will be diligently referenced.

CLASSIFICATION OF RACES

Races are classified by boat type, event gender, rower age and, where applicable rower ability (novices). Classifications are made in accordance with Rule 11 of the NZSSRA Rules.

BOAT TYPES

The regatta is for rowing boats that meet the requirements of Rule 4 of the NZSSRA Rules and fall in the following categories: Singles, Doubles, Pairs, Quadruples, Fours and Eights. Any boat may be inspected before racing commences and may be spot-checked at any other time to see it complies with these requirements. Unsafe or non-compliant boats shall be disqualified in accordance with Rule 7 of the NZSSRA Safety System.

THE ORDER OF EVENTS

The order of events is that set by the NZSSRA Schools Committee in 2021 and is listed in Appendix D of the NZSSRA Constitution.

MAXIMUM ENTRIES

The maximum number of entries for an event is 64 crews. Should an event be over-subscribed (reach the event maximum of 64 crews at the initial entry stage) then the crews-per-school-per event limit may be lowered for that event or a time trial held to determine those that will progress.



PROGRESSION

Progression to the finals will follow the Option 7 Championships progression system approved by NZSSRA and found on the NZSSRA website. The Option 1 or 2 progression system may be used if circumstances require. The allocation of crews to the preliminary heats will be seeded. 'B' finals will be held in accordance with the Rules. 'B' finals will be started prior to the 'A' final of that event. 'C' & 'D' Finals will be held with the Semi-finals where appropriate for that event.

The time interval set between successive 'A' Finals will be 20 minutes but the Race Committee could alter this to suit the prevailing conditions. Persons arranging entries should take this into account to ensure crews have sufficient time available to make boat and/or crew changes between races.

REGATTA FEES

The fees for the regatta, which are given GST exclusive, are as follows:

Entry fees

Eights \$68.00 per crew
Fours/Quads \$50.00 per crew
Pairs/Doubles \$38.00 per crew
Singles \$29.00 per crew
Amenity Fee \$32.00 per pupil

Other Fees

Entry Protest \$20.00
Race Protest \$20.00
Appeal \$20.00
Late Scratching \$40.00
Non-Progression \$150.00
Non-Notified Crew Change \$50.00
Non-Notified Scratching (DNS) \$60.00

ENTRIES

Entries close at **10:00PM on Tuesday 15th March 2020**. Entry into the regatta is by way of Online Regatta Entry on the NZSSRA website (www.schoolrowing.org.nz) or at rowIT (rowit.nz)

Schools are limited to the following limits per event:

- **Single and Double Sculls – 2 entries**
- **All other boats – 4 entries**

Supplementary entries may be allowed where space permits.

Late entries will not be permitted (except as provided for in Local Condition 7)

The Online Regatta Entry system will generate all the forms necessary to complete entry into the regatta and they must then be signed by school's Principal and emailed to: declarations@schoolrowing.org.nz

The current practice for all Regattas on Lake Ruataniwha will apply. This means that an invoice will be produced by SIR after the close of entries and emailed to the address provided. You will also be invoiced for all additional regatta fees such as non-progression and did not start charges.

PRE-REGATTA MEETING

The pre-regatta Safety Briefing and managers' meeting will be held at via Zoom. Attendance at this meeting by the school's Adult Safety Officer is compulsory for those schools wishing to compete at the regatta.



ADDITIONAL LOCAL CONDITIONS

1. SAFETY

Use of the lake is subject to Maritime NZ Rules and ECAN's Navigation Safety Bylaws 2010. Note that in enforcing these laws, ECAN also enforces compliance with the RNZ's Water Safety Code 2016. All crews and coaches should be conversant with NZSSRA Safety System and RNZ's Water Safety Code 2016.

Note: WATER SAFETY BEGINS WITH YOU - Rowing, by its very nature has an element of danger associated with it and it is a responsibility of all participants to ensure that safe practices are to be used at all times. Safety equipment is available for the official racing and training hours of the regatta only. **Responsibility for going on the water lies at all times entirely with the crew.**

2. TEMPERATURE IMPACT

Ambient temperatures can vary significantly during the day in Twizel and as part of the safety program it is highly recommended that all rowers on the water wear thermals during the times of low temperatures. Please ensure that your rowers have the appropriate clothing with them and that they are appropriately dressed for the conditions.

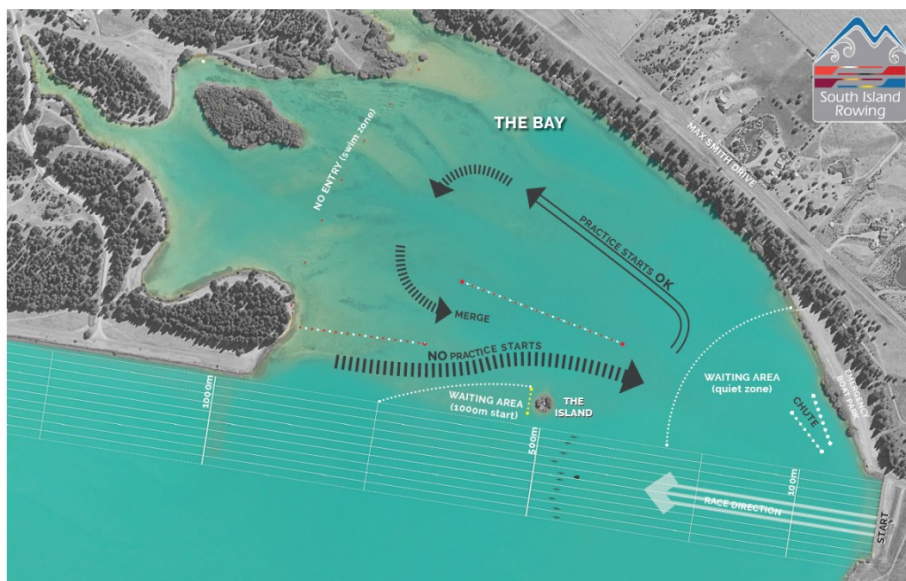
3. BIO-SECURITY HAZARD

This Lake contains Didymo which is a Bio-security Hazard. All boats and oars must be washed with detergent when leaving the Complex. Facilities are available at the boat park entrance and you are expected to use them. Failure to do so places you in breach of the Bio-Security Act and liable for prosecution.

4. ROWED CODE

NOTE: This is a hydro lake used for the commercial production of electricity. Conditions change unexpectedly. Environment Canterbury has rigid controls over where rowing is permitted and must be respected.





Meridian.

TRAFFIC PLAN | THE BAY & START ZONE

5. FLAG SIGNALS

Green flag Lake is open for training and racing

Yellow Flag Regatta is temporarily postponed

Red flag Lake is closed for training and racing

Blue Flag Regatta is abandoned

6. TRAINING ON THE LAKE

NZSSRA official training hours are from half an hour after sunrise until half an hour before sunset but not 30 minutes before, during or 30 minutes after the times of racing. The Site Safety Officer and Chief Umpire will determine when crews are allowed to train on the course (defined as the area of water that is on the start side of the finish line) and elsewhere on the lake during the Regatta.

South Island Rowing intends to make safety resources available that will allow training during the days before the regatta commences. As this is dependent on the availability of suitably trained personnel, details will be made available from the Secretary's Office on the day. Crews must obey the requirements given in the relevant safety documentation.

Training on the lake is done entirely at the crew's risk and the school's Adult Safety person is responsible for ensuring MSA, NZRA, NZSSRA and ECAN Safety Rules are complied with. Any crew ignoring these conditions or in breach of the safety system may be fined a monetary penalty and may be disqualified by the Chief Umpire from taking further part in the regatta. The Chief Umpire shall also reprimand the coach.

7. CREW CHANGES/SUBSTITUTIONS

All crew changes and substitutions must be completed online through the NZSSRA website (www.schoolrowing.org.nz) or at rowIT (rowit.nz) by **1pm on Saturday 26th March 2020**. After this time, they must be advised via NZSSRA website (www.schoolrowing.org.nz) or via rowIT (rowit.nz) by an appropriately authorised member of the school party no less than 60 minutes prior to the first race for the event in which the crew is entered and in all cases prior to the crew taking to the water.



Substitutions after the preliminary round of racing must be accompanied by a medical certificate (in cases of COVID-19 the SIR Covid Team may provide this certificate) or evidence of expulsion from the regatta and must be advised via NZSSRA website (www.schoolrowing.org.nz) or via rowIT (rowit.nz) to Regatta Control by an appropriately authorised member of the school party at the earliest opportunity but no less than 60 minutes prior to the race.

In addition to the above due to the current COVID-19 pandemic the Schools Committee has agreed that a 100% substitution can be made prior to the close of supplementary entries, which will be when Rule 14 takes effect. Following the close of supplementary entries, a crew can be scratched and a late entry made for a new crew prior to the first heat of that event.

8. SCRATCHINGS & NON-PROGRESSION

Any scratching lodged before 1pm **on Saturday 26th March 2020**, must be lodged on the NZSSRA website (www.schoolrowing.org.nz) or at rowIT (rowit.nz) and after this time must be advised via NZSSRA website (www.schoolrowing.org.nz) or via rowIT (rowit.nz) to Regatta Control by an appropriately authorised member of the school party as follows:

- a. for heats: by **10:00AM on the day of the race**; except for races before 10:30AM, which must be notified at least **30 minutes before the race start**.
- b. for finals: at least four hours before the start of the specific final.

Any boat that is scratched from or does not start a race it has progressed to shall incur a non-progression monetary **penalty of \$150.00**.

Schools who fail to notify a scratching by the nominated time or whose crew/s do not take part in an event in which they have been entered, shall incur a monetary **penalty of \$100.00** for each crew not properly scratched. The scratching penalty can be incurred in addition to the non-progression penalty.

Any crew that scratches due to COVID-19 will not incur a non-progression fee.

9. COXSWAINS WEIGHTS

All coxswains must provide their own weights.

10. COMMUNICATION DEVICES

NO cell phones or other electronic communication devices (capable of communication with anyone outside the boat) are permitted to be carried in a boat whether switched on or off.

11. CREW IDENTIFICATION

There have been a number of instances where there have been difficulties with crew recognition. To solve such difficulties, photographs of crews may be taken at the start or finish of any race and held as part of the official records of the event.

12. BOAT NUMBERS

The Regatta Committee supplies bow numbers to be used at the regatta and these are the only numbers to be used.



13. PROCEEDING TO START

All crews must proceed to the start on the shoreline side of the course and then into The Bay unless specifically directed. Crews must line up in the start zone prior to moving into the starting blocks following the direction of the Race Official. Crews must not proceed to the start on the course or cross the course at any stage during the regatta without prior approval of the Chief Umpire in each instance.

Crews must be in the start zone at least five minutes before the advertised start time of their race. The starter will inform crews of the time remaining before the start of the race at appropriate intervals.

14. START PROCEDURE

As it is difficult to identify raised arms, it is preferred that prior to the commencement of the start command the Bow or Two person of a crew raise their arms. These are not recognised after the attention call.

Please note: **THE START AREA IS A QUIET ZONE**

15. NON-START RETURNS

For safety reasons, non-starters must return to Boat Park on regatta course as directed.

16. MEDAL PRESENTATION

Medals are available to the first, second and third placed crews from the 'A' finals. After each race finishes the first three place getters are to proceed to the back of the dais for the ceremony. All other boats are to be returned directly to their zones. The medal presentations will be made to each race and medal winning Crew members as soon as any preliminary actions are complete.

17. PHOTOGRAPHY

By entering this regatta, under these conditions' schools agree to having audio recordings, photographs, videos and/or other images taken of their students, supporters, volunteers and coaches during the regatta and these may be used for media (both print and electronic) and promotional purposes in connection with this event, future events and/or Rowing NZ business. No drones are permitted at this regatta (with the exception of regatta management according to the conditions agreed to with Rowing NZ).

18. CONDUCT OF ROWERS

Schools Coaches and crews are reminded that the school party is considered to be in attendance at the regatta from the start of the official opening parade till the end of the official spare day. These rules will be applied for any breaches on or off the water during this time and it is recommended that all members of the party be familiar with these rules. Any crew or crew members found guilty by the Race Committee of bringing the Regatta or Rowing into disrepute, on or off the water, may be disqualified from further participation in the Regatta and could prejudice the participation of other crews from the same school.

19. SMOKING, ALCOHOL & DRUGS

This regatta is deemed to be Smoke, Alcohol and Drug free for competitors and the CONDUCT provisions apply to any breaches. Coaches and Crews are advised that, as a condition of entry into this regatta, rowers may be required to undergo tests for substances prohibited by Rowing New Zealand's anti-doping code, the International Rowing Federation, FISA and the IOC. Such tests will be undertaken by the New Zealand



Sports Drug Agency who will be acting in an independent capacity under the New Zealand Sports Drug Agency Act.

20. VENUE CARE

The regatta venue is private property and should be given due respect. To assist the hosts maintain the venue please do not litter, look after the assets and report any damage or breakages to Regatta Secretary Office. The CONDUCT provisions apply to persons abusing the hosts hospitality.

21. BOAT PARK

The boat park will be closed during the regatta; and schools will be allocated individual zones.

22. PARKING

Parking is only permitted in the designated areas.

23. SPECTATORS

The event is spectator-free.

24. RAFFLES

The selling of raffle tickets or goods for the purpose of raising money for any cause is not permitted under any circumstances unless permission has been gained from South Island Rowing Inc. prior to the regatta. Anybody caught selling raffle tickets or goods for the purpose of raising money at this regatta runs the risk of their crews being scratched from their events.

25. SOURCE DOCUMENTS

The source documents for this regatta are:

- The NZSSRA Rules for Racing, Regulations for Regattas, Safety System and associated appendices. (www.schoolrowing.org.nz)
- The NZSSSC school team eligibility criteria (www.nzsssc.org.nz)
- The NZRA Rules for Racing (www.rowingnz.kiwi)
- Rowing Water Safety Code 2016 (NZRA) (www.rowingnz.kiwi)
- Maritime Safety Authority Rules (www.msa.govt.nz)
- ECAN, Navigation Safety Bylaw 2010 (www.ecan.govt.nz)

26. VARIATIONS

The Race Committee reserves the right to change the programme, course, conditions or progression system should exceptional circumstances prevail.

27. COVID-19

These Conditions do not necessarily take into account the latest Covid Protection Framework settings; all information relating to COVID-19 will be circulated to attendees by the SIR Covid Team.

28. DISCLAIMER

South Island Rowing Inc. reminds all schools and pupils participating in this Regatta that while every care will be taken by the regatta officials to ensure that the regatta is conducted safely and efficiently in accordance with the rules of racing established by the New Zealand Secondary

Schools Rowing Association it is the responsibility of schools to ensure that those rules are complied with and of the pupils to comply with them to ensure safe rowing activity.



2022 Aon Maadi New Zealand Secondary School Championships



Further, it is a condition of participation in this regatta that all participants accept and note that no liability either in tort or any other nature whatsoever is accepted by or will attach to the New Zealand Secondary Schools Rowing Association for any harm, damage, loss, costs, expenses, inconvenience, interference of whatever nature and whatever kind including any damage to equipment or injury to persons of whatever nature incurred in the course of or in connection with or in any way related to the regatta regardless of whether any error or omission, wrongdoing, oversight, negligence or other tort whatsoever on the part of any regatta official or other person may be established.

The program has been approved
by the New Zealand Secondary Schools Rowing Association



This event has been sanctioned
by the New Zealand Secondary School Sports Council

