

1 STANDARDS

All racing shall be conducted according to the NZRA Rules of Racing 2017, applicable articles of the NZRA Constitution, Regulations for Regattas and Directives and Conditions of RNZ and South Island Rowing Inc. All participants are expected to be familiar with these documents.

Further, this regatta shall be conducted in strict accordance with the Rowing NZ Rowing Water Safety Code 2016 and the Rowing Competition Safety Code and an exemption from the requirements of MSA 91 for competitors [excluding coxswains] to wear flotation aids has been granted.

2 DISTANCE

The course on Lake Ruataniwha is a 2000-meter lane Albano course with markers at every 500m and lanes 1-10. Up to ten lanes may be used for all events. All Masters events will be rowed over 1000 meters, with 'a' events on Saturday and 'b' events on Sunday.

3 TIME

The regatta will commence on Saturday January 27th, 2018 at 7:30 a.m. or as directed by the day sheet

4 SAFETY MEETING

The safety briefing will be held in the **McClelland Lodge Theatre on Friday January 26th, 2018 at 7.30 p.m.** A representative of each club or school competing must attend and sign the attendance register. The Safety Officer for every Club/School (if not the representative present) will also need to be identified. The attendee will be responsible for conveying the details from the safety briefing to the competitors and coaches of that club or school. Any club or school failing to attend may **not be permitted to start.**

5 SAFETY

Use of the lake is subject to Maritime NZ Rules and RNZ's Competition Safety Code, which is managed by Environment Canterbury.

NOTE: Non-compliance leads to penalties. Rowing, by its very nature has an element of danger associated with it and it is a responsibility of all participants to ensure that safe practices are to be used at all times. SIR safety equipment is available for the regatta only.

All participants need to be familiar with the safety documents mentioned above.

6 FLAG SIGNALS

Green: Regatta is on.

Yellow: Regatta is temporarily postponed.

Red: Course Closed

Blue: Regatta is abandoned

7 NUMBERS

All boats must carry the correct numbers. Alphanumeric numbers will be provided from the numbers hut close to the launching area. They have to be returned immediately after the race. Failure to return the number will result in a charge of \$25.00 per number not returned. The number displayed must be that designated in the draw and must read correctly to Judges during racing. No other numbers will be permitted.

8 PROCEEDING TO START

All crews must proceed to the start on the inside of the course unless specifically directed (see Rowed Code). Crews must not proceed to the start on the course or cross the course when a race is in progress.

Crews must be in the START zone at least five minutes before the advertised start time of their race. The race will take place without reference to absentees. The starter will inform the crews of the time remaining before the start at appropriate intervals.

9 START PROCEDURE

The start procedure is described in Rules 53 to 58 of the RNZ Rules of Racing.

10 NON-START RETURNS

For safety reasons, non-starters must return to the boat park on the course as directed by the Umpire.

11 RACING COLOURS

Every rower, shall wear the registered colours of the club or school represented. This shall consist of at least a singlet and shorts combination or an equivalent one-piece garment.

Crews representing a single club shall wear a uniform of the registered colours of the club. Undergarments may be worn uniformly under the official uniform. In composite crews each rower shall wear the strip of the club represented.

Competitors comprising RPC crews shall be subject to the uniform requirements of the RPC.

In exceptional cases, the Race Committee may authorise the wearing of an alternative uniform.

12 MEDALS

The members of the first, second and third placed crews of 'A' Finals will receive medals. Providing there are 3 or more crews in the race. Medals can be collected from the Medal Room under the Control Building. In the event of finals not being run, medal allocation will be based on the heat times.

13 COXSWAINS

The minimum weight for a coxswain is 55kg. RNZ Rule 22 will be applied, and coaches should make themselves familiar with this, particularly, deadweight and the timing of weigh ins.

NOTE: Coxswains shall wear a New Zealand Safety Standards approved life jacket rated for the weight of the coxswain. Inflatable life jackets are prohibited.

14 PROTESTS

An objection has to be made to the race umpire immediately after the finish of the race (RNZ Rule 70). A crew whose objection has been rejected or crews affected by the acceptance of the objection or crews disputing the published results may lodge a protest in writing to the Race Committee not later than one hour after the Umpire has communicated their decision regarding the objection (RNZ Rule 71). A deposit of \$50, which shall be refunded if the protest or appeal is allowed, shall accompany the protest.

15 REPECHAGES & PETITE FINALS

Repechages will not be rowed. 'B' finals will be rowed if deemed appropriate by the Race Committee.

16 SUBSTITUTES

Substitutes are subject to RNZ Rule 45 and must be advised to the Regatta Control via the Regatta Secretary prior to the first race for the event in which the crew is entered.

17 SCRATCHINGS

All day one scratchings must be advised in writing to the Regatta Secretary by 10:00 AM or for earlier races, 30 minutes before the race start. Entry Fees for scratchings will not be refunded. All crews racing on day one, who

qualify for racing on day two, are expected to race on day two, however scratchings are permitted without penalty if they are advised to the Regatta Secretary within four hours before the start of that race.

A Penalty Fee, as described in Clause 19 below, will be charged for all crews who fail to notify the Regatta Secretary of their intentions regarding changes, or who having progressed through the heats fail to race on day two.

18 TRAINING

Any crew training on the lake during the event must be accompanied by a suitably equipped motor boat (as defined in the Rowing NZ Safety documentation). Crews wishing to train on the lake must comply with the Maritime Safety Authority (MSA) and Environment Canterbury (ECAN) Rules, be within the allowable area of the lake (see map) and Coxswains must wear their life jackets while training. The SIR Safety and Risk Management Plan applies.

NO training will be allowed on the Lake during the Regatta.

19 FEES

The entry fees are as follows: 1X = \$16 2-/2X = \$19 4-/4+/4X = \$25 8+/8X+ = \$37 (Includes the RNZ Levy)

An amenity fee of \$16 per rower including coxswain is also payable.

A late scratching fee of \$40 and a failure to progress fee of \$50 will apply as necessary.

GST at 15% is to be added to all fees and charges.

20 ENTRIES

The closing date for entries is Tuesday January 16th, 2018 at 9:00PM, late entries will NOT be accepted. All Entries are to be made electronically on the rowing web site: www.rowit.co.nz

Entries are restricted to 3 events per rower; however, a rower may enter a fourth event if that entry is for a second eight/octuple event.

Clubs are reminded that A Finals will run in either 5 or 10-minute intervals depending on the inclusion of B Finals. It is therefore necessary to have enough boats to ensure crews do not come late to the start.

21 PAYMENT

Payment based on the entry information at the entry close time is required before the start of racing. Any subsequent change will be completed after the regatta.

22 COMPOSITE CREWS

Composite are permitted in accordance with NZRA rule 18.

23 RANDOM DRUG TESTING

Rowers are reminded that random drug testing may be undertaken during this regatta by the New Zealand Sports Drug Agency.

24 BOAT WASHING

In response to the Didymo Bio-security Hazard it is a requirement that **all** boats and oars must be washed with detergent when entering into the boat park and when leaving the boat park. Facilities are available for this and your cooperation is appreciated.

***** No Wash, No Row *****

And when leaving

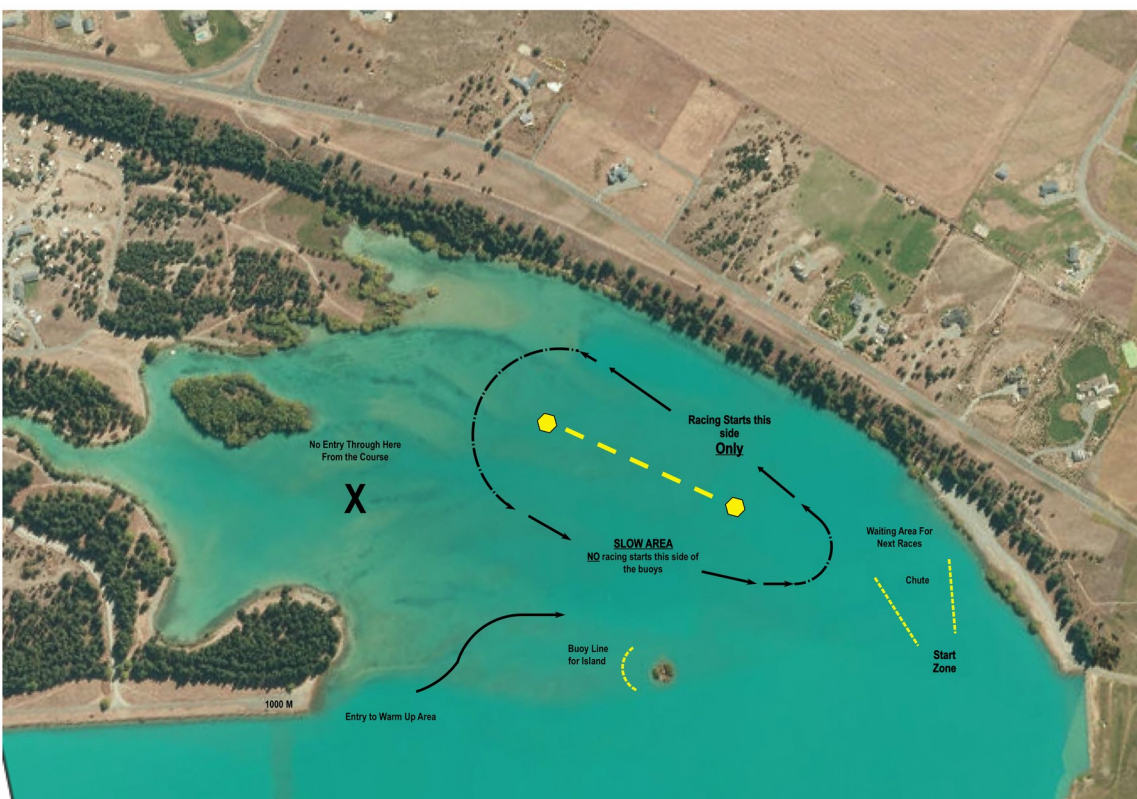
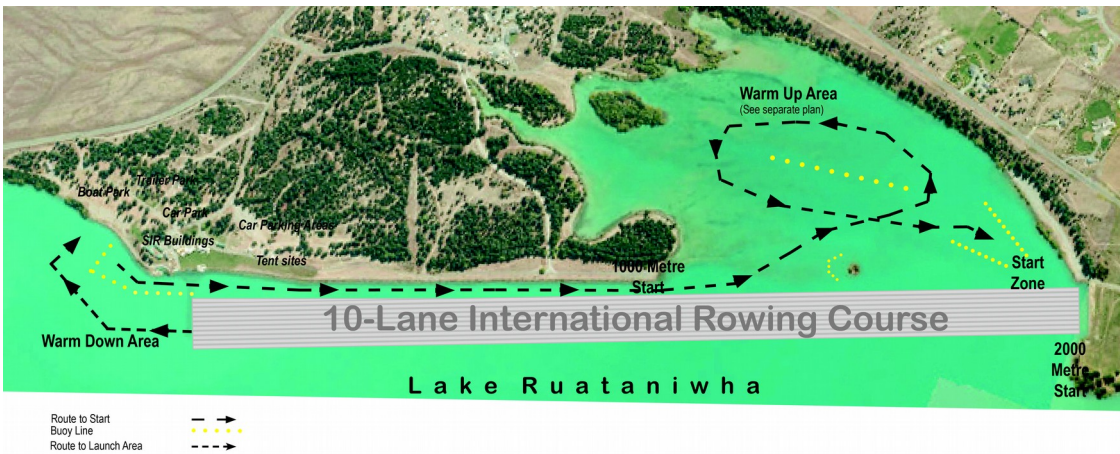
***** CHECK CLEAN DRY *****

25 DISCLAIMER

South Island Rowing Inc. reminds all rowing organisations and rowers participating in this Regatta that while every care will be taken by the regatta officials to ensure that the regatta is conducted safely and efficiently in accordance with the Rules of Racing established by the New Zealand Rowing Association, it is the responsibility of clubs to ensure that those rules are complied with and of the rowers to comply with them to ensure safe rowing activity.

Further, it is a condition of participation in this regatta that all participants accept and note that no liability either in tort or any other nature whatsoever is accepted by or will attach to the New Zealand Rowing Association Inc or South Island Rowing Inc. for any harm, damage, loss, costs, expenses, inconvenience, interference of whatever nature and whatever kind including any damage to equipment or injury to persons of whatever nature incurred in the course of or in connection with or in any way related to the regatta regardless of whether any error or omission, wrongdoing, oversight, negligence or other tort whatsoever on the part of any regatta official or other person may be established.

26 ROWED CODE



Traffic Plan for The Bay, Lake Ruataniwha