

DATE

The regatta will commence with the Safety Briefing on Friday 10th March 2017 followed by the heats on Saturday 11th March 2017 and run until Sunday 12th March 2017.

TIMES

Racing will commence at 8am on Saturday 11th March 2017 or as advised at the Safety Briefing and daily as directed by the Day Sheets.

LOCATION AND COURSE DETAILS

The regatta will be held on Lake Ruataniwha, Twizel, New Zealand. The course consists of a 2000-meter ten-lane Albano course with markers at every 500 meters and the lanes numbered 1-10 with number 1 being closest to the shore. Only eight lanes will be used for this regatta. The course is straight with little but even flow against the race direction.

CONDITIONS APPLYING TO THE REGATTA

Embracing all activities on the water are the Health and Safety Laws and Regulations. The regatta is being held in accordance with the NZSSRA Rules (for the New Zealand Secondary Schools Regatta), Regulations and Safety System, NZSSSC school team eligibility criteria and these Terms and Conditions. All competitors and Coaches should be familiar with them. In addition, the Regulations for Regattas and the Directives and Conditions of RNZ and South Island Rowing will be diligently referenced.

BOATS

Any boat may be inspected before racing commences and may be spot-checked at any other time to see it complies with these requirements. Unsafe or non-compliant boats shall be disqualified in accordance with Rule 7 of the NZSSRA Safety System.

MAXIMUM ENTRIES

There is a maximum of 64 crews per event.

PROGRESSION

Progression to the finals will follow an eight lane heats and finals progression system approved by NZSSRA with those not progressing eliminated. The allocation of crews to the preliminary heats may be seeded. 'B' finals may be held in events where more than 16 crews start in the heats. 'B' finals will be started prior to the 'A' final of that event.

Finals may begin on Saturday following a break after heats. The time interval set between successive 'A' Finals will be 10 minutes but could be reduced to 5 minutes if there is no 'B' final. Persons arranging entries should take this into account to ensure crews have sufficient time available to make boat and/or crew changes between races.

TROPHIES

There are three trophies presented at this regatta, the Points Bell Trophy for Overall Points winner and the Fred Strachan Cup for the Boy's Under-18 Eight and the Kate Strachan Memorial Cup for the Girl's Under-18 Eight.

REGATTA FEES

The fees for the regatta, which are given GST exclusive, are as follows:

Entry fees

Eights \$40.00 per crew

Fours/ Quads \$30.00 per crew

Pairs / Doubles \$20.00 per crew

Singles \$15.00 per crew

Amenity fee \$16.00 per pupil

Other fees

Entry Protest \$20.00

Race Protest \$20.00

Appeal \$20.00

Late scratching \$40.00

Non-progression \$40.00

ENTRIES

Entries close at **10:00PM on Monday 27th February 2017**. Entry into the regatta is by way of Online

Regatta Entry on the NZSSRA website: www.schoolrowing.org.nz Each School is limited to a maximum of two crews per race except eights and octuples. Supplementary entries may be allowed where space permits. **Late entries will not be permitted**

The Online Regatta Entry system will generate all the forms necessary to complete entry into the regatta and they must [then be signed by school's Principal and emailed to: 2017.SISS@schoolrowing.org.nz](#)

The current practice for all Regattas on Lake Ruataniwha will apply. This means that an invoice will be produced by SIR after the close of entries and emailed to the address provided. The payment of entries fees is to be made prior to the regatta and is not refundable. You will be subsequently invoiced for all additional regatta fees such as late entries and penalty charges.

PRE-REGATTA MEETING

The pre-regatta Safety Briefing and managers' meeting will be held at 7:30 PM on Friday 10th March 2017 in the McClelland Lodge Theatre. NOTE: The following is mandatory for schools competing in this regatta:

1. a school's representative must attend the Safety Briefing
2. The name of the travelling [Adult](#) Safety Officer along with the contact details must be provided
3. The name of the [Person in Charge](#)/Head Coach on site along with the contact details must be provided.

Crews will **not** be allowed to race until the above 3 conditions have been met and signed for on the attendance register.

ADDITIONAL LOCAL INFORMATION

1. SAFETY

Use of the lake is subject to Maritime NZ Rules and ECAN's Navigation Safety Bylaw 2016. Note that in enforcing these laws, ECAN also enforce compliance with the Rowing NZ's Water Safety Code 2016.

All crews and coaches should be conversant with NZSSRA Safety System and the above-mentioned documents.

WATER SAFETY BEGINS WITH YOU

Rowing, by its very nature has an element of danger associated with it and it is a responsibility of all participants to ensure that safe practices are to be used at all times. Safety equipment is available for the official racing and training hours of the regatta only. **Responsibility for going on the water lies at all times entirely with the crew.**

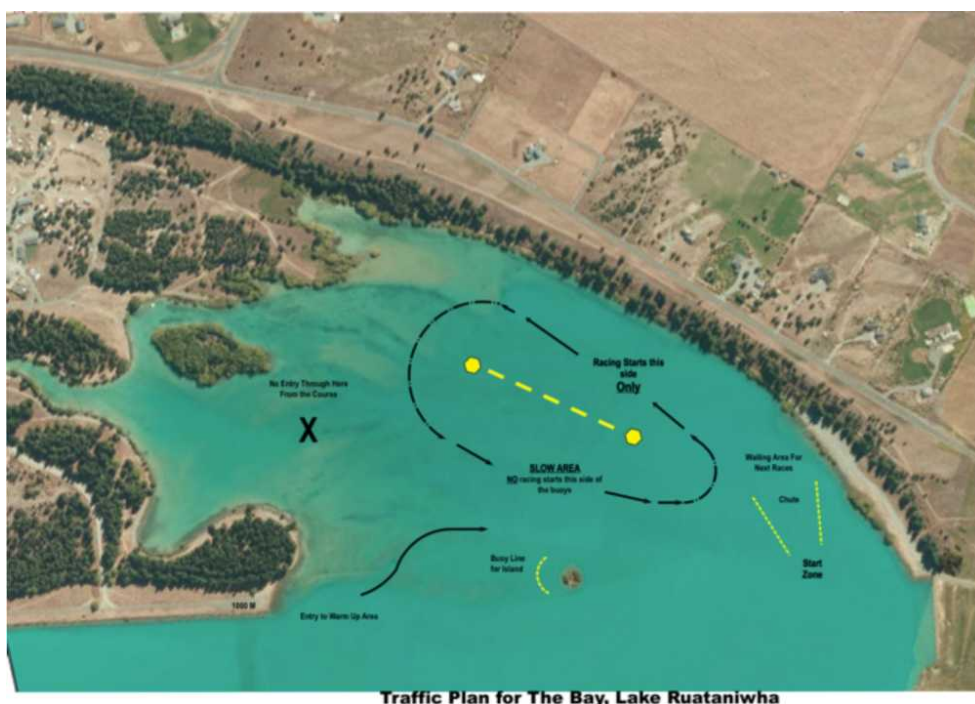
2. BIO-SECURITY HAZARD

This Lake contains Didymo which is a Bio-security Hazard. **All** boats and oars must be **washed** with detergent when leaving the Complex. Facilities are available at the boat park entrance and you are expected to use them. Failure to do so places you in breach of the Bio-Security Act and liable for prosecution.

3. ROWED CODE

NOTE: This is a hydro lake used for the commercial production of electricity. Conditions change unexpectedly. Environment Canterbury has rigid controls over where rowing is permitted and must be respected.





Traffic Plan for The Bay, Lake Ruataniwha

4. FLAG SIGNALS

Green flag Lake is open for training and racing

Yellow Flag Regatta is temporarily postponed

Red/No flag Lake is closed for training and racing

Blue flag Regatta is abandoned

5. TRAINING ON THE LAKE

NZSSRA official training hours are from half an hour after sunrise until half an hour before sunset but not 30 minutes before, during or 30 minutes after the times of racing. The Safety Officer and Chief Umpire will determine when crews are allowed to train on the course (defined as the area of water that is on the start side of the finish line) and elsewhere on the lake during the Regatta.

South Island Rowing intends to make safety resources available that will allow training during the Friday before the regatta. As this is dependent on the availability of suitably trained personnel, details will be made available from the Secretary's Office on the day. Crews must obey the requirements given in the relevant safety documentation. Training on the lake is done entirely at the crew's risk and the school's Adult Safety person is responsible for ensuring MSA, NZRA, NZSSRA and ECAN Safety Rules are complied with. Any crew ignoring these conditions or in breach of the safety system may be fined a monetary penalty and may be disqualified by the Chief Umpire from taking further part in the regatta. The Chief Umpire shall reprimand the coach.

6. CREW CHANGES/SUBSTITUTES

All crew changes and substitutions must be completed online through the NZSSRA web site at www.schoolrowing.org.nz by **1pm on Friday 10th March 2017**. After this time they must be advised in writing to the Regatta Secretary by an appropriately authorised member of the school party no less than 60 minutes prior to the first race for the event in which the crew is entered and in all cases prior to the crew taking to the water.

Substitutions for subsequent races must be accompanied by a medical certificate or evidence of expulsion from the regatta and must be advised in writing to Regatta Control by an appropriately authorised member of the school party at the earliest opportunity but no less than 60 minutes prior to the race.

7. SCRATCHINGS & NON-PROGRESSION

Any scratching lodged before 1pm **on Friday 10th March 2017** must be lodged on the NZSSRA web site www.schoolrowing.org.nz and after this time must be advised in writing to Regatta Control by an appropriately authorised member of the school party as follows:

- a) for heats: by **10:00AM on the day of the race**; except for races before 10:30AM, which must be notified at least **30 minutes before the race start**.
- b) for finals: within four hours of start of the specific final.

Any boat that is scratched from or does not start a race it has progressed to shall incur a non-progression monetary **penalty of \$40.00**.

Schools who fail to notify a scratching by the nominated time or whose crew/s do not take part in an event in which they have been entered, shall incur a monetary **penalty of \$40.00** for each crew not properly scratched. The scratching penalty can be incurred in addition to the non-progression penalty.

8. COXSWAINS WEIGHTS

All coxswains must provide their own weights.

9. COMMUNICATION DEVICES

NO cell phones or other electronic communication devices (capable of communication with anyone outside the boat) are permitted to be carried in a boat whether switched on or off.

10. CREW IDENTIFICATION

There have been a number of instances where there have been difficulties with crew recognition. To solve such difficulties, photographs of crews may be taken at the start or finish of any race and held as part of the official records of the event.

11. BOAT NUMBERS

The Regatta Committee supplies bow numbers to be used at the regatta and these are the only numbers to be used. Numbers not returned within 1 hour after the race in which they were used shall be charged for at \$25 + GST per missing number (as a new number has to be produced for the next use). Numbers lost on the water must be advised to the Number Steward at the Boat Marshals hut.

12. PROCEEDING TO START

All crews must proceed to the start on the shoreline side of the course and then into "The Bay unless specifically directed. Crews must line up in the start zone prior to moving into the starting blocks following the direction of the Race Official. Crews must not proceed to the start on the course or cross the course at any stage during the regatta without prior approval of the Chief Umpire in each instance.

Crews must be in the start zone at least five minutes before the advertised start time of their race. The starter will inform crews of the time remaining before the start of the race at appropriate intervals.

13. START PROCEDURE

As it is difficult to identify raised arms, it is preferred that prior to the commencement of the start command the Bow or Two person of a crew raise their arms. These are not recognised after the attention call.

Please note:

THE START AREA IS A QUIET ZONE

14. NON-START RETURNS

For safety reasons, non-starters must return to Boat Park on regatta course as directed.

15. MEDAL PRESENTATION

Medals are available to the first, second and third placed crews. After each race finishes all boats are to be returned to the boat park and lane numbers to the steward's hut. The medal presentations will be made within 30 minutes of the end of each race and medal winning Crew members should present themselves to the dais to receive their medals.

It is recognised that not all crew members can be available at this time but as soon as the recipients from each crew are available the ceremony will be started. A coach's medal is available to those coaches who accompany their crew to the medal presentation. **In the event of a final race not being able to be run, medals will be presented based on times in the heats.**

16. CONDUCT OF ROWERS

Schools Coaches and crews are reminded that the school party is considered to be in attendance at the regatta from the start of the first day of racing till the end of the official spare day. These rules will be applied for any breaches on or off the water during this time and it is recommended that all members of the party be familiar with these rules. Any crew or crewmembers found guilty by the Race Committee of bringing the Regatta or Rowing into disrepute, on or off the water, may be disqualified from further participation in the Regatta and could prejudice the participation of other crews from the same school.

17. SMOKING, ALCOHOL & DRUGS

This regatta is deemed to be Smoke, Alcohol and Drug free for competitors and the CONDUCT provisions apply to any breaches.

Coaches and Crews are advised that, as a condition of entry into this regatta, rowers may be required to undergo tests for substances prohibited by Rowing New Zealand's anti-doping code, the International Rowing Federation, FISA and the IOC. Such tests will be undertaken by the New Zealand Sports Drug Agency who will be acting in an independent capacity under the New Zealand Sports Drug Agency Act.

18. VENUE CARE

The regatta venue is private property and should be given due respect. To assist the hosts maintain the venue please do not litter, look after the assets and report any damage or breakages to Regatta Control. The CONDUCT provisions apply to persons abusing the hosts hospitality.

19. BOAT PARK

The boat park will be closed during the regatta. Vehicle access during the regatta is not available. Only boat trailers used for storage will be permitted to be left in the boat park but there is ample parking adjacent to the Boat Park for transport vehicles.

20. PARKING

Parking is available in the designated areas. No vehicles are to be parked in the boat park area, this is for trailers only.

21. RAFFLES

The selling of raffle tickets or goods for the purpose of raising money for any cause is not permitted under any circumstances unless permission has been gained from South Island Rowing Inc. prior to the regatta. Anybody caught selling raffle tickets or goods for the purpose of raising money at this regatta runs the risk of their crews being scratched from their events.

22. SOURCE DOCUMENTS

Source documents for this regatta are:

The source documents for this regatta are:

- The NZSSRA Rules for Racing, Regulations for Regattas, Safety Systems and associated appendices. (www.schoolrowing.org.nz)
- The NZSSSC school team eligibility criteria (www.nzsssc.org.nz)
- The NZRA Rules for Racing (www.rowingnz.kiwi)
- Rowing Water Safety Code September 2016 (NZRA) (www.rowingnz.kiwi)
- Maritime Safety Authority Rules (www.msa.govt.nz)
- ECAN, Navigation Safety Bylaw 2016 (www.ecan.govt.nz)

23. VARIATIONS

The Race Committee reserves the right to change the programme, course, conditions or progression system should exceptional circumstances prevail.

24. DISCLAIMER

South Island Rowing Inc reminds all schools and pupils participating in this Regatta that while every care will be taken by the regatta officials to ensure that the regatta is conducted safely and efficiently in accordance with the rules of racing established by the New Zealand Secondary Schools Rowing Association it is the responsibility of schools to ensure that those rules are complied with and of the pupils to comply with them to ensure safe rowing activity.

Further, it is a condition of participation in this regatta that all participants accept and note that no liability either in tort or any other nature whatsoever is accepted by or will attach to the New Zealand Secondary Schools Rowing Association for any harm, damage, loss, costs, expenses, inconvenience, interference of whatever nature and whatever kind including any damage to equipment or injury to persons of whatever nature incurred in the course of or in connection with or in any way related to the regatta regardless of whether any error or omission, wrongdoing, oversight, negligence or other tort whatsoever on the part of any regatta official or other person may be established.

THIS EVENT IS SANCTIONED BY THE NZSSSC.
THE REGATTA PROGRAMME HAS BEEN APPROVED BY THE NZSSRA.

